

GHSR Antibody (C-term)
Affinity Purified Rabbit Polyclonal Antibody (Pab)
Catalog # AP11873b

Specification

GHSR Antibody (C-term) - Product Information

Application	WB, IHC-P,E
Primary Accession	O92847
Other Accession	A5A4K9 , O95254 , NP_940799
Reactivity	Human, Mouse
Predicted	Pig, Rabbit
Host	Rabbit
Clonality	Polyclonal
Isotype	Rabbit IgG
Calculated MW	41329
Antigen Region	326-357

GHSR Antibody (C-term) - Additional Information

Gene ID 2693

Other Names

Growth hormone secretagogue receptor type 1, GHS-R, GH-releasing peptide receptor, GHRP, Ghrelin receptor, GHSR

Target/Specificity

This GHSR antibody is generated from rabbits immunized with a KLH conjugated synthetic peptide between 326-357 amino acids from the C-terminal region of human GHSR.

Dilution

WB~~1:1000
IHC-P~~1:50~100
E~~Use at an assay dependent concentration.

Format

Purified polyclonal antibody supplied in PBS with 0.09% (W/V) sodium azide. This antibody is purified through a protein A column, followed by peptide affinity purification.

Storage

Maintain refrigerated at 2-8°C for up to 2 weeks. For long term storage store at -20°C in small aliquots to prevent freeze-thaw cycles.

Precautions

GHSR Antibody (C-term) is for research use only and not for use in diagnostic or therapeutic procedures.

GHSR Antibody (C-term) - Protein Information

Name GHSR

Function Receptor for ghrelin, coupled to G-alpha-11 proteins. Stimulates growth hormone secretion. Also binds other growth hormone releasing peptides (GHRP) (e.g. Met-enkephalin and GHRP-6) as well as non-peptide, low molecular weight secretagogues (e.g. L-692,429, MK- 0677, adenosine).

Cellular Location

Cell membrane; Multi-pass membrane protein.

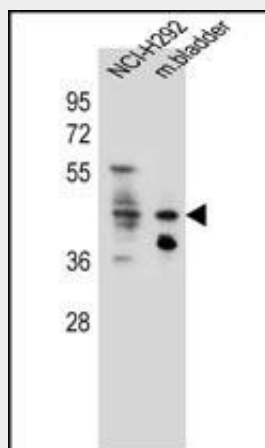
Tissue Location

Pituitary and hypothalamus.

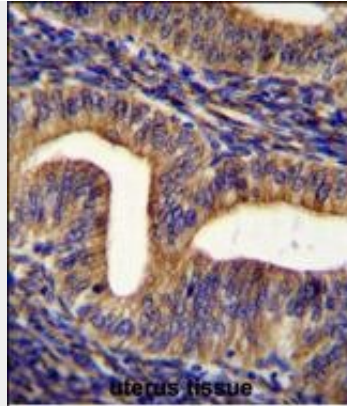
GHSR Antibody (C-term) - Protocols

Provided below are standard protocols that you may find useful for product applications.

- [Western Blot](#)
- [Blocking Peptides](#)
- [Dot Blot](#)
- [Immunohistochemistry](#)
- [Immunofluorescence](#)
- [Immunoprecipitation](#)
- [Flow Cytometry](#)
- [Cell Culture](#)

GHSR Antibody (C-term) - Images

GHSR Antibody (C-term) (Cat. #AP11873b) western blot analysis in NCI-H292 cell line and mouse bladder tissue lysates (35ug/lane). This demonstrates the GHSR antibody detected the GHSR protein (arrow).



GHSR Antibody (C-term) (Cat. #AP11873b) immunohistochemistry analysis in formalin fixed and paraffin embedded human uterus tissue followed by peroxidase conjugation of the secondary antibody and DAB staining. This data demonstrates the use of GHSR Antibody (C-term) for immunohistochemistry. Clinical relevance has not been evaluated.

GHSR Antibody (C-term) - Background

This gene encodes a member of the G-protein coupled receptor family. The encoded protein may play a role in energy homeostasis and regulation of body weight. Two identified transcript variants are expressed in several tissues and are evolutionary conserved in fish and swine. One transcript, 1a, excises an intron and encodes the functional protein; this protein is the receptor for the Ghrelin ligand and defines a neuroendocrine pathway for growth hormone release. The second transcript (1b) retains the intron and does not function as a receptor for Ghrelin; however, it may function to attenuate activity of isoform 1a. Mutations in this gene are associated with autosomal idiopathic short stature.

GHSR Antibody (C-term) - References

Bailey, S.D., et al. Diabetes Care 33(10):2250-2253(2010)
Landgren, S., et al. Alcohol. Clin. Exp. Res. 34(9):1519-1524(2010)
Aghajanova, L., et al. Reprod Sci 17(9):823-832(2010)
Pinheiro, A.P., et al. Am. J. Med. Genet. B Neuropsychiatr. Genet. 153B (5), 1070-1080 (2010) :
Liu, C.Y., et al. Carcinogenesis 31(7):1259-1263(2010)